



37th Spring

**Intercollegiate  
Woodsmen's  
Competition**

Dartmouth College  
May 6th and 7th 1983



**THE  
NORTH  
FACE**

## TOP OF THE LINES

The North Face line of functional outdoor equipment is very special—it's the finest available. It's also competitively priced and unconditionally guaranteed. We're your exclusive dealer in this area.

**THE DARTMOUTH**

**Co-op**

*On Main Street  
Hanover, N.H. 03755*

TEL (603) 643-3100

STORE OPEN 9-5 MON THROUGH SAT

# Intercollegiate Woodsmen's Competition

FRIDAY & SATURDAY MAY 6 and 7, 1983

## DARTMOUTH COLLEGE

- \*DARTMOUTH COLLEGE
- \*PAUL SMITH'S COLLEGE
- \*UNIVERSITY OF NEW HAMPSHIRE
- \*UNIVERSITY OF MAINE
- \*COLBY COLLEGE OF MAINE
- \*UNITY COLLEGE
- \*COMMUNITY COLLEGE OF THE FINGER LAKES
- \*LAKEHEAD UNIVERSITY
- \*SUNY, SYRACUSE
- \*UNIVERSITY OF VERMONT

Sponsored by the  
CABIN and TRAIL DIVISION  
of the  
DARTMOUTH OUTING CLUB



## EASTMAN'S DRUG STORE

68 South Main St.  
Hanover

## Hanover Stringed Instruments

ACCESSORIES  
REPAIRS  
MUSIC  
INSTRUMENTS  
LESSONS



68 South Main Street,  
Hanover, N.H.  
603-643-3143  
Upstairs next to Eastman's

TRUSTS ■ ESTATE PLANNING  
INVESTMENT MANAGEMENT

## SOPHISTICATED TRUST SERVICES IN RURAL NEW ENGLAND



Dartmouth NATIONAL offers attentive, personal service. And we utilize one of the most sophisticated, automated on-line trust accounting systems. Call William B. Hamilton, Jr., V. P. and Senior Trust Officer for a detailed explanation of our services. (603) 643-2500.

**Dartmouth  
NATIONAL  
Bank OF HANOVER**  
Main Street, Hanover, N.H.  
■ Member FDIC

## WOODSMEN'S MEET

MAY 6 and 7, 1983

## DARTMOUTH COLLEGE

*Co-Directors* — Elaine Anderson '83, Diana Wright '83

*Head Judge* — Sam Smith '49

*Master of Ceremonies* — Alex McCormick '80

*Director of Competition Set-Up* — Dan Mullen '83

*Director of Publicity* — Dave Kotz '86

*Director of Publications* — Ann Rooney '86

*Awards* — Alex Tait '86

*Woodsmen's B-BQ* — Ashley Korenblat '83

*Advisors* — Earl Jette, Jim Taylor '74, Put Blodgett '54

### Contributors

Britton Lumber Co. Inc.

Wagner Woodlands

Gary Ulman & Sons

Stanhope Lumber

Joe's Equipment

Elmendorf Board Corp.

P K Brown & Sons, Inc.

Trumbull-Nelson Construction Co.

New England Telephone Co.

Thank you to all who contributed trophies for competitors.

Thanks to the following classes for their donations:

1954, 1955



## DARTMOUTH OUTING CLUB

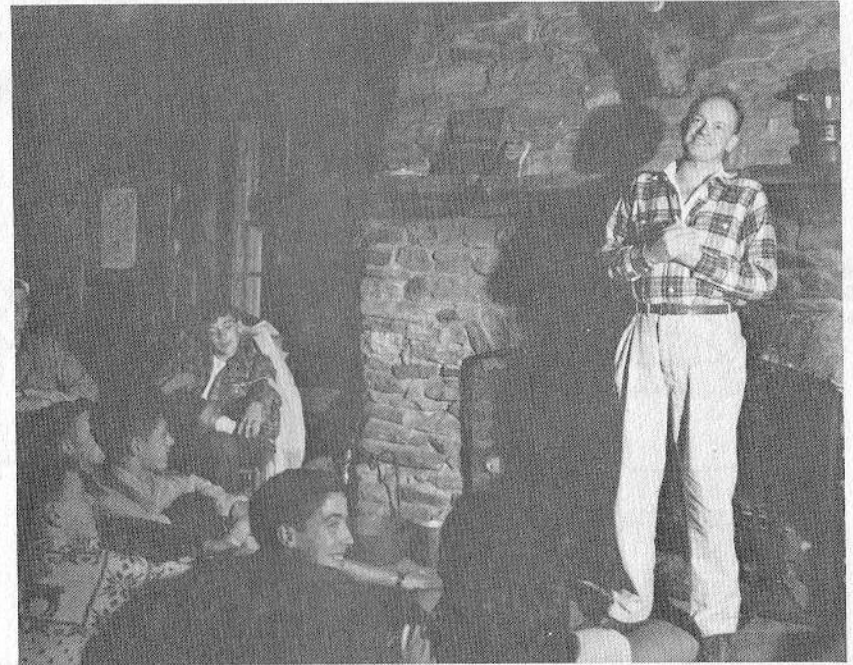
The Dartmouth Outing Club, sponsor of this spring's meet, is seventy-four years old this year, which makes it the oldest outing club in the country. Founded in 1909 by Fred Harris '11 to stimulate interest in previously neglected winter sports (Harris owned the only pair of skis on campus at the time), the D.O.C. has since expanded into a diverse conglomerate of interrelated activities. The service activities of the club are carried on by three major divisions. By far the most active of these is Cabin and Trail, whose four season activities encompass almost every form of outdoor recreation from cabin and trail maintenance to ski touring, climbing, and sponsorship of the Woodsmen's Weekend program. Among the division's responsibilities are the upkeep of 75 miles of Appalachian Trail linking the systems in the Green and White Mountains and the D.O.C.'s 10 cabins and 9 shelters stretched along the trail and in the College's 27,000 acre timberland reserve in northeastern New Hampshire. Winter Sports, the second of the divisions to be founded, handles ski meets and the intramural ski program, and other winter recreation with the exception of ski touring, snowshoeing, and winter mountaineering, which are handled by Cabin and Trail. A third division, Environmental Studies, serves the College community by providing education and action in environmental protection. The ESD maintains a regional environmental resources library for the use of interested persons.

In addition to the three divisions, the D.O.C. has affiliated with it several specialized clubs devoted to hunting and fishing, technical climbing, horse-back riding, trap and skeet shooting, bicycling, and white- and flat-water canoeing.

### WOODSMEN'S WEEKEND 1947-1983

The Woodsmen's Weekend competition was organized in 1947 by the late Ross McKenney, the D.O.C. woodcraft advisor. The contest was born from a desire to pass on to others the fun and craft of using lumberjack tools plus an appreciation of the rough pride in this vanishing breed of man.

Dartmouth, the University of Maine and Kimball Union Academy were the only schools represented in the first few years. As time passed, more teams became involved. Today as many as 10 schools in the Northeast support active woodsmen's teams. Although the number of events and competitors has increased, the spirit of Woodsmen's Weekend remains one of friendly rivalry among men and women who share a heartfelt appreciation of the out-of-doors. Dartmouth is pleased to host Woodsmen's Weekend on its thirty-sixth anniversary.



JOHN SLOAN DICKEY

The members of the Cabin and Trail Division of the DOC dedicate this meet to John Sloan Dickey, President Emeritus of Dartmouth College. President Dickey stands out among college presidents not only for his reputation as an outdoorsman, but for his involvement, while in office, with those students who were interested in the out-of-doors. Over the years, he has introduced countless Dartmouth students to the outdoor experiences which make Dartmouth unique, whether during freshmen trips, or fishing or snowshoeing. His support added strength to the Dartmouth Outing Club, and thus enriched its members, for which we will ever be in his debt.



WHERE PEOPLE GET TOGETHER

## FOOD STORE & FOOD BIN

*a great place to  
shop for those with  
great appetites*

45 So. Park St.,  
Hanover, N.H.  
643-2667

**If you haven't been  
to the**

**ICE CREAM  
MACHINE—**

**you haven't been  
to Hanover.**

**Our own  
homemade ice cream**

**Opposite Memorial Stadium  
27 Lebanon Street**



Peter  
Christian's  
Tavern

39 SOUTH MAIN STREET

HANOVER, NEW HAMPSHIRE  
TELEPHONE 603/643-2343

THE EDGEWOOD INN

MAIN STREET • NEW LONDON, N.H.  
TELEPHONE 603/526-4042

While participating  
or Spectating  
this weekend,

- Come and join us at PC's  
and:
- cross-cut a meat & cheese  
board with a friend
- axe a carrot cake
- fell a tall, cool pitcher of  
brew
- portage to our potage
- cast yourself into a Brownie  
Chip pie
- come celebrate with us —

Check your PEE-VE  
at the door!

## DESCRIPTION OF EVENTS

Each event is worth 100 points. The team with the fastest time or greatest accuracy is awarded 100 points; scoring for the other teams is graded proportionately to these winning results. Women's teams will also be scored relative to other women's teams.

While allowing legitimate innovations or technique improvements for the various events, the rules are intended to ensure some similarity to the conditions under which woodsmen must actually function.

Following are capsule descriptions of this weekend's events:

1. **One Man Canoe Race.** Canoe an obstacle course. Total time for two single canoeists will be used in scoring.
2. **Two Man Canoe Race.** Canoe the same course as in event 1. Two competitors shall make a team and run the course once.
3. **Portage Race.** Paddle the canoe over a stretch of water, carry it overland with the aid of a packboard, and finish back through water. Two competitors will run the course; the total time will be used for scoring. The entrants may not paddle with the pack on or portage with the pack off.
4. **Packboard Race.** Lash a blanket, sand bag (weighing 50 lbs.) and a 10" frying pan to a packboard and run a course. Each competitor will take a turn carrying the pack.
5. **Vertical Chop.** Chop through an 8" x 8" white pine cant held vertically in the fastest possible time.
6. **Axe Throw.** Throw an axe at a target. The axe must weigh 2 lbs. and be 24" long. Each competitor will get several practice throws and 4 official throws.
7. **Pulp Throw** for Distance and Accuracy. Throw a 4 foot stick of hardwood pulp for distance along an assigned line of travel. Scoring will be made on the best of three throws.
8. **Chain Sawing.** Make several upcuts and downcuts in the cant by the use of a power saw in the shortest possible time.
9. **Pole Climb.** Climb a 20 foot pole with spurs in the fastest possible time.

Continued on next page



10. **Chain Throw.** Wind up and "throw" the unravelled chain, a forest surveyor's device. Scoring is determined by speed and by appearance of the "thrown" chain.
11. **Scoot Loading.** Load three logs up a ramp onto a scoot for speed. Peaveys are the only tools allowed for this event.
12. **Pulp Throwing.** Throw pulpwood between 2 sets of stakes 20 feet apart. Number one competitor will throw 4 pieces from pit A to pit B. Number two competitor will retrieve and throw the pulp back to pit A. The pulp will be thrown back and forth until 48 sticks have landed between the stakes. This is a team event.
13. **Log Rolling.** Roll, with the aid of peaveys, a log for speed. The first two competitors will roll the log from the starting stakes around a dogleg to another set of stakes. A second set of competitors will roll the log back to the starting place. Then the remaining pair returns the log to end the event.
14. **Felling.** Fell a pole as accurately as possible. With one competitor beginning and the second competitor finishing the cut, the two competitors will fell the pole as close as possible to a stake planted in the ground.
15. **Splitting.** Split 9 bolts of wood each into 4 pieces. Each competitor will have 3 bolts to split.
16. **Speed Chopping.** Chop through an 8" x 8" white pine cant. Three competitors in turn will each make complete cuts with axes while standing on the cant.
17. **Buck Sawing.** Cut through an 8" x 8" square white pine cant. One buck saw is used and each competitor makes 2 cuts and hands the saw to the next competitor.
18. **Crosscut sawing.** Cut through an 8" x 8" white pine cant. The teams will divide into 3 pairs and each pair will cut 3 discs and hand the saw to the next pair until 9 discs have been cut.
19. **Fire Building.** Boil a given amount of soapy water in the shortest time. Each competitor will have an axe, a knife, three wooden matches and a block of wood at his disposal.



Maple Syrup • Cheeses • Fruit Baskets  
Wine and Groceries

51 LYME ROAD  
HANOVER, N.H.  
643-2684



*The Home Decor Shop*

*Fine Dinnerware, Glassware,  
and Tabletop Linens  
Complete Bath Shop,  
Fragrant Soaps and Scents  
Gourmet Cooking  
and Serving Accessories*

Nugget Arcade Hanover, N.H.  
643-2920

Open Monday - Saturday  
9:30 a.m.-5:30

**GOURMET ALLEY**

**GOURMET ALLEY**

**You Cut  
the Wood**

**We'll Cut  
the Cheese !**

**WINES  
CHEESES  
GOURMET FOODS**

**45 S. Main  
Hanover, N.H.**

Chain Saws  
Sales — Service — Parts  
McCulloch  
Homelite  
Sachs Dolmar  
Husqvarna

**Don's Sales & Service**

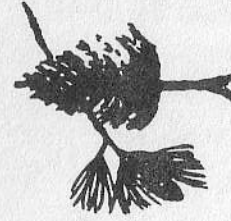
57 Mechanic St.  
Lebanon, N.H.  
Tel. 448-3110



Celebrating Five Years of Service to Landowners of the Upper Valley.  
Assuring the Future of the Forest Resource through Wise Management.

**CONTINUOUS FOREST MANAGEMENT**  
**EHRLHARD E. FROST**

R.R. 2 Tandy Brook Road  
Cornish, NH 03745  
(603) 675-6213



— Surveying New Hampshire And Vermont —  
— FIP & ACP Vendor — Current Land Use Assessment Application & Consultation —  
— Forest Management Plans — Selective Timber Harvesting — Marketing —  
— Timber Cruising & Appraisals — Timber Stand Improvement —

MAY THE BEST TEAM WIN!



---

**Special Thanks to**

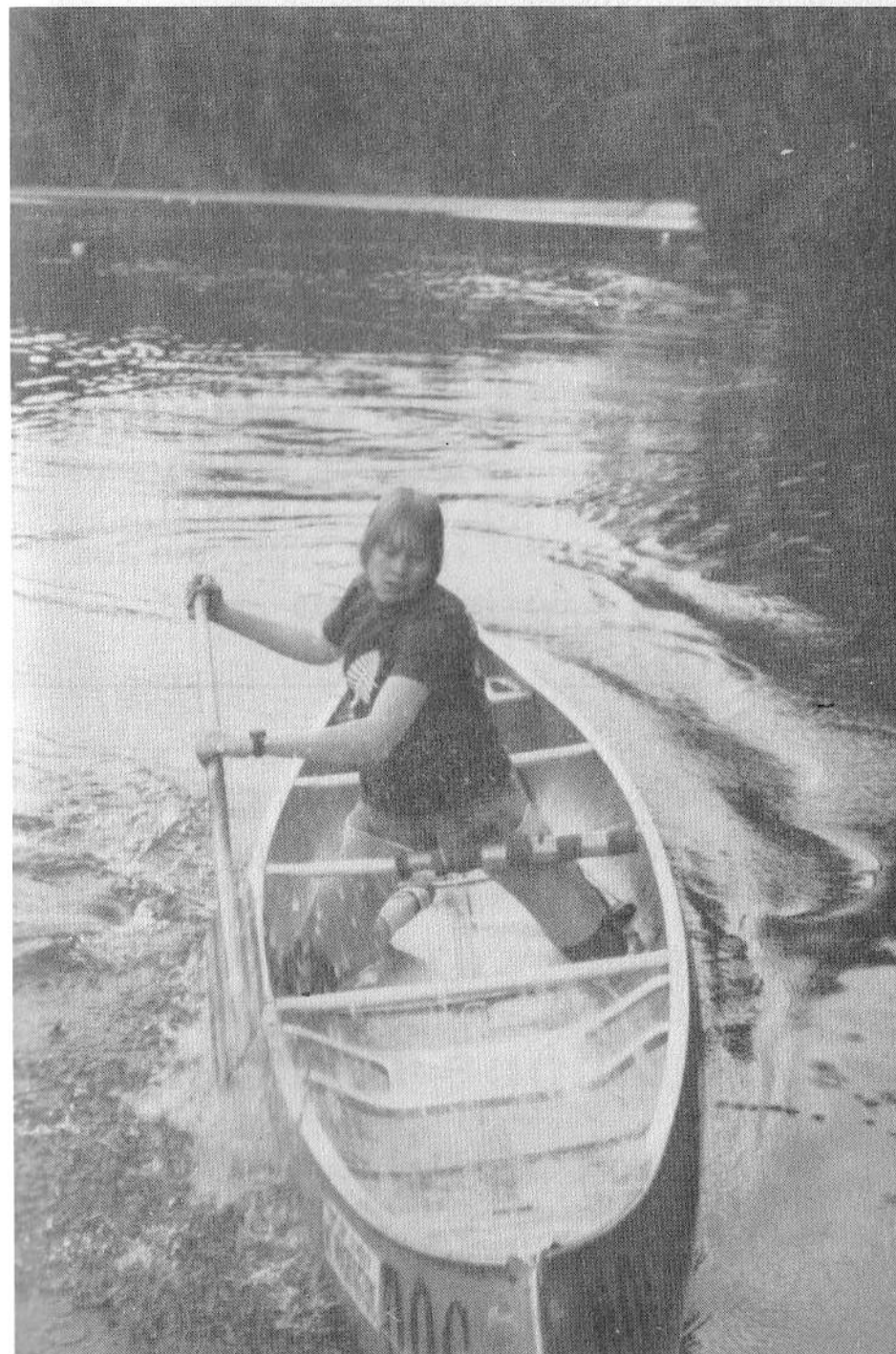
# **Wagner Woodlands**

**Lyme, NH**

**603-795-2165**

**for invaluable help in  
supporting the  
1983 Woodsmen's Competition**

---





The Cabin and Trail Division of  
**THE DARTMOUTH OUTING CLUB**

expresses sincere thanks for  
donating lumber used in  
this year's competition.

## **P K Brown & Sons, Inc.**

Meriden Rd., Lebanon, N.H.

**Tel.: 603-448-2840**

The Cabin and Trail Division of  
**THE DARTMOUTH OUTING CLUB**

expresses sincere thanks for  
donating lumber used  
in this year's competition

## **Stanhope Lumber**

River Road, Lyme, N.H.

**Tel.: 603-643-2496**

### **WOODSMEN'S WEEKEND SCHEDULE OF EVENTS**

**FRIDAY, MAY 6**

**Storrs Pond/Oak Hill**

Captains' Meeting	8:00 A.M.
Opening	9:00 A.M.
Singles Canoeing	9:00 - 1:30 P.M.
Doubles Canoeing	9:00 - 1:30 P.M.
Canoe Portage	1:30 - 4:00 P.M.
Team Pulp Toss	1:30 - 4:00 P.M.
Firebuilding	4:00 P.M.

**Robinson Hall - Room 17**

Captains' Meeting	7:00 P.M.
-------------------	-----------

**SATURDAY, MAY 7**

**Garipay Field**

Opening	8:00 A.M.
Singles Events	8:00 - 11:00 A.M.
Scout Load	8:00 - 11:00 A.M.
Log Rolling	8:00 - 11:00 A.M.
Splitting	11:00 - 12:30 P.M.
X-Cut Sawing	12:30 - 3:00 P.M.
Buck Sawing	12:30 - 3:00 P.M.
Speed Chop	12:30 - 3:00 P.M.
Vertical Chop	12:30 - 3:00 P.M.
Felling	3:00 - 5:30 P.M.
Packboard Relay	3:00 - 5:30 P.M.

**Storrs Pond**

Barbeque & Awards	Evening
-------------------	---------